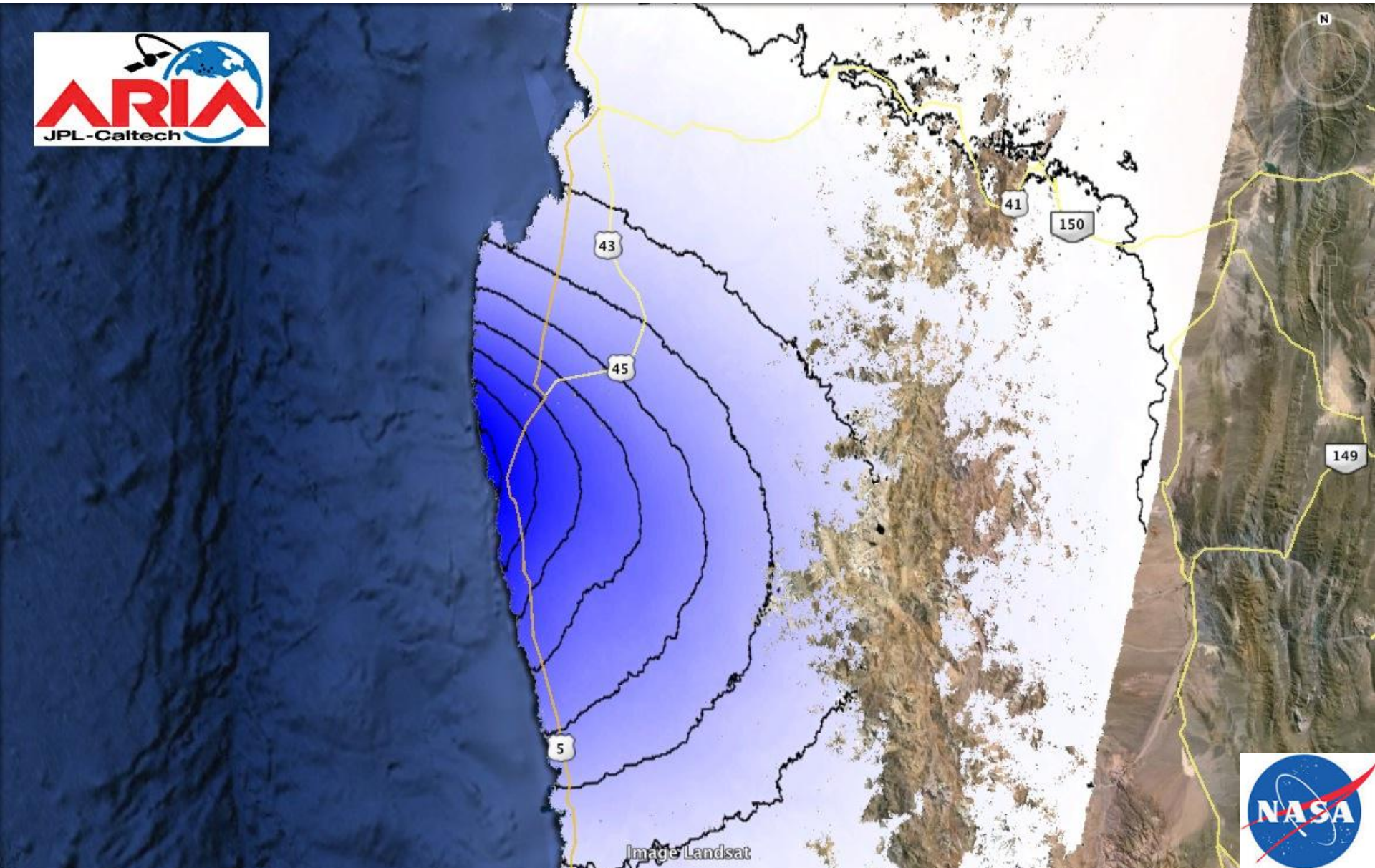
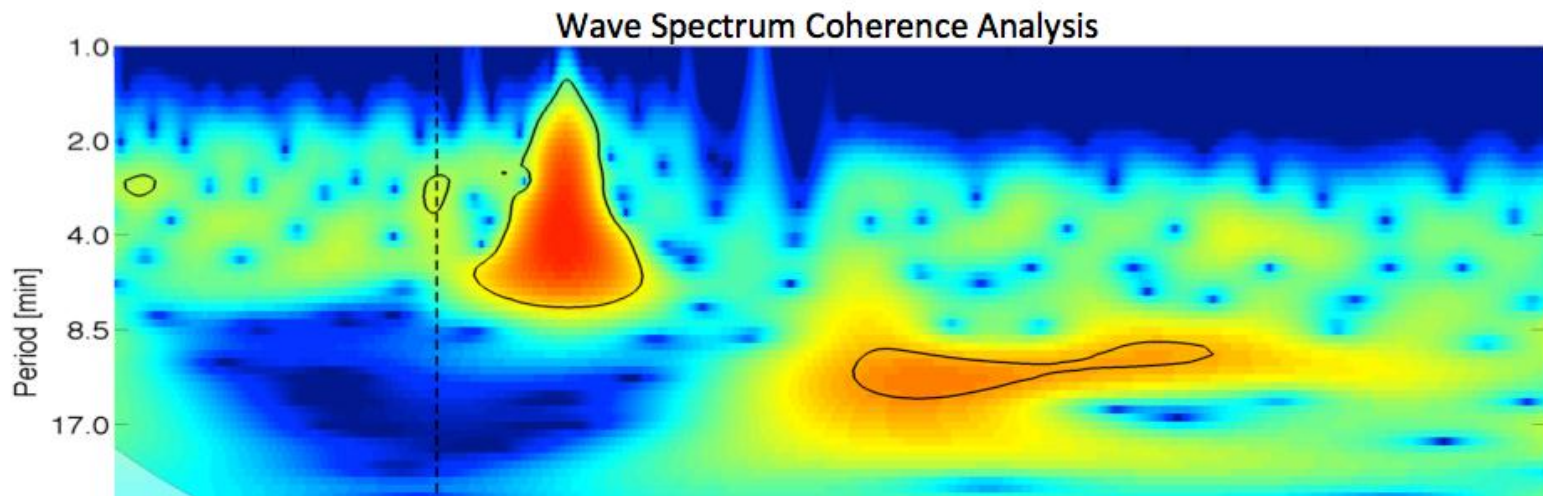
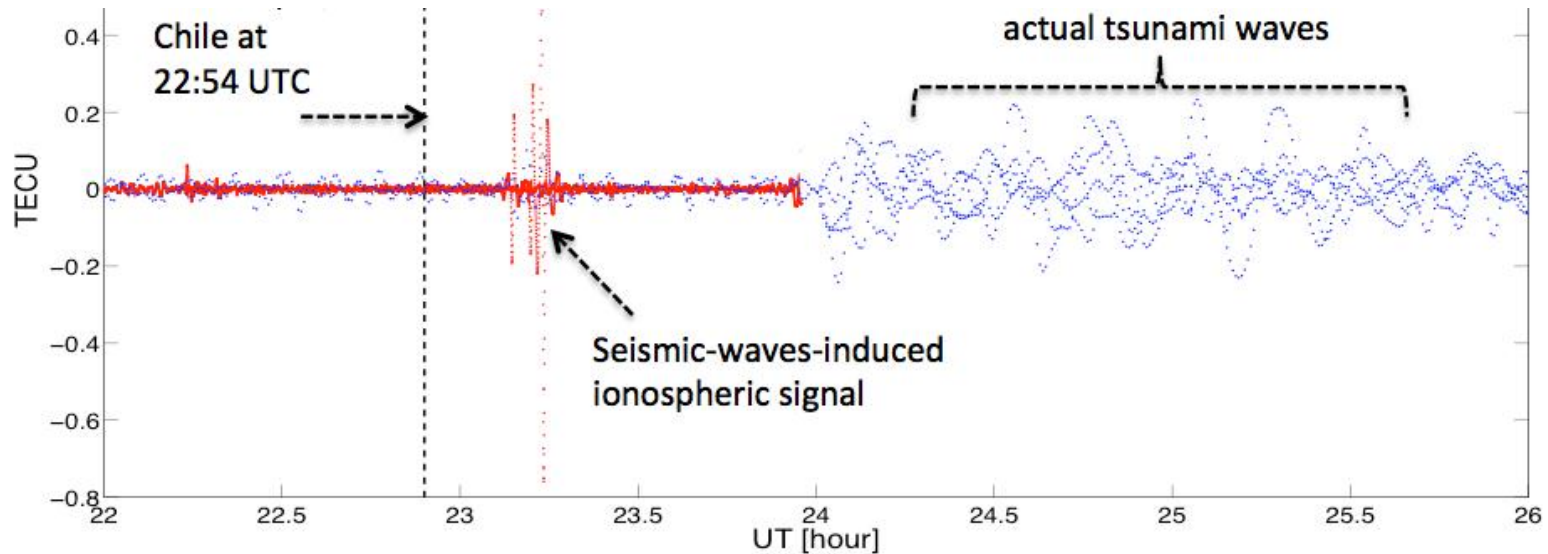


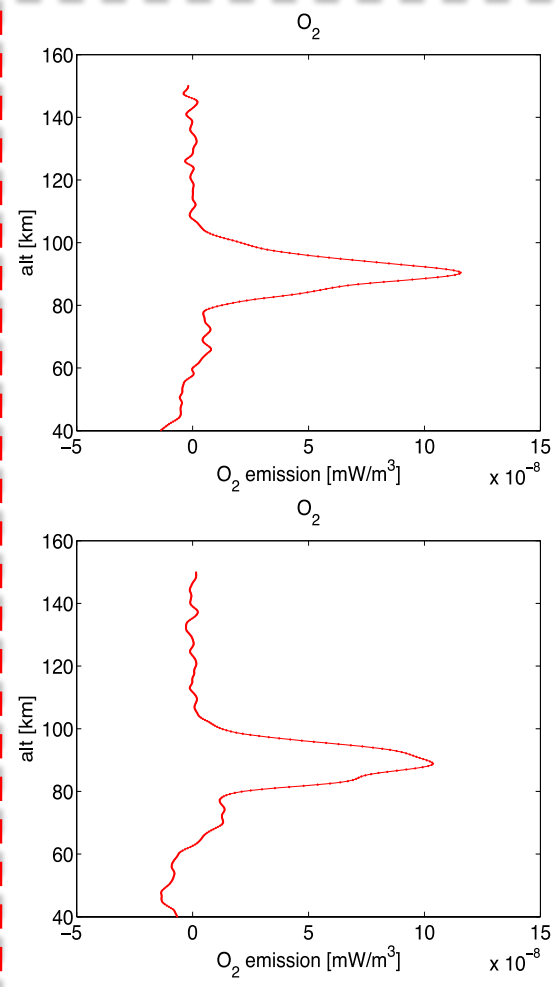
# Sentinel 1a InSAR image of the Chile Earthquake

1.4 m of range change collected 12 h after mainshock



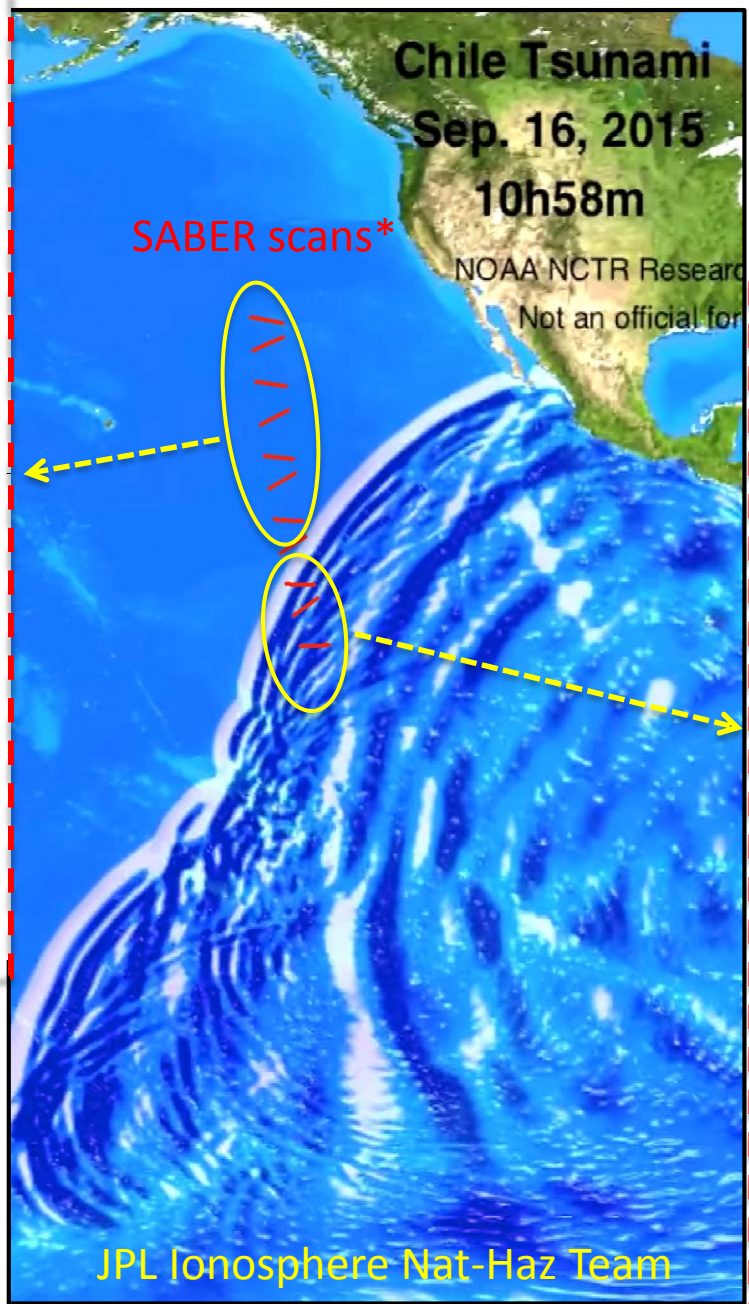
# GPS observed ionospheric signal from both the earthquake and tsunami





Before arrival of tsunami wavefront indicate

- smaller amplitudes and
- smooth profiles



\*Courtesy of NASA's TIMED/SABER Team

Tsunami-wave-generated airglow perturbations indicate

- increased amplitudes by factor of 2 to 4
- multi-peak structures

